

# GeoFilter Dust

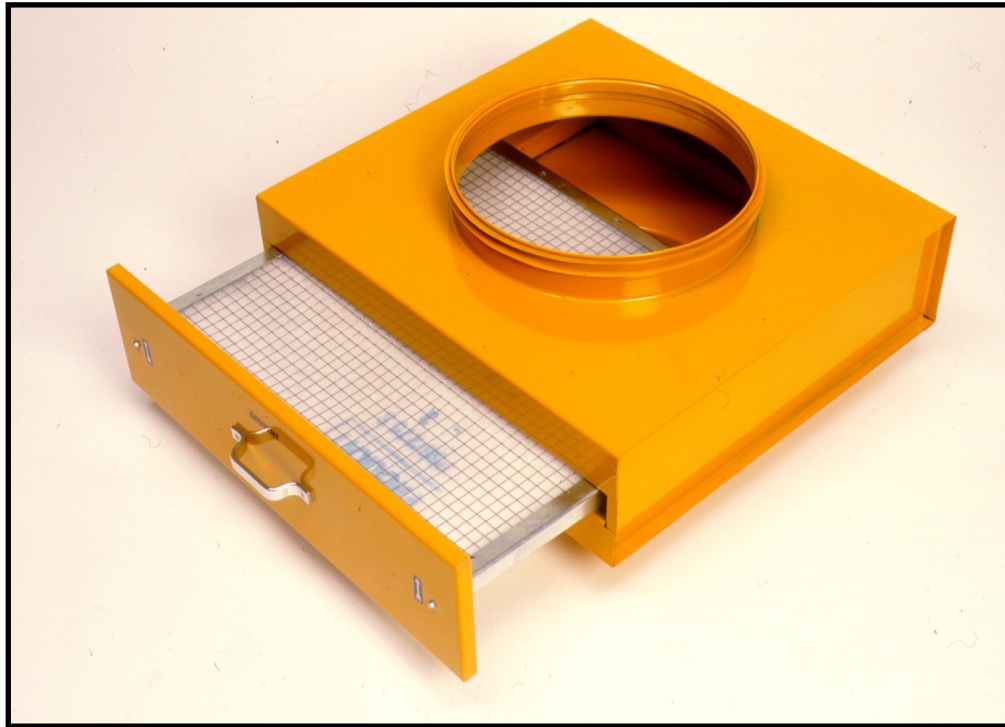
Art.no. 15-051

The GeoFilter Dust may be applied as a supplement to existing extraction systems. This preliminary separation is intended for being built into the channel system, where separate filtration is required, for example at grinding machines, belt sanders, etc. for the protection of the grinding fan. The extraction capacity of the preliminary separator corresponds to 2-3 outlets.

8

## Effective spot extraction

GeoFilter Dust, shown with open filter cassette



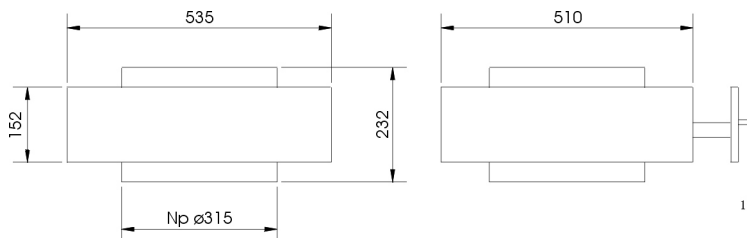
The filter mat is mounted in a retractable cassette. When the cassette is activated, the filter is cleaned by a built-in brush system. Then the dust may be emptied into a dustbin or a bucket via the sliding damper.

-The filter box is executed in epoxy enamelled and galvanised steel.

-Effective filter area: 0.22 m<sup>2</sup>

Separation efficiency: 85% (Eu3)

For older grinding machines, which cannot be equipped with suction branch, we recommend the ASA-2 or the MINI-Arm with ø100 mm suction hood, for example.



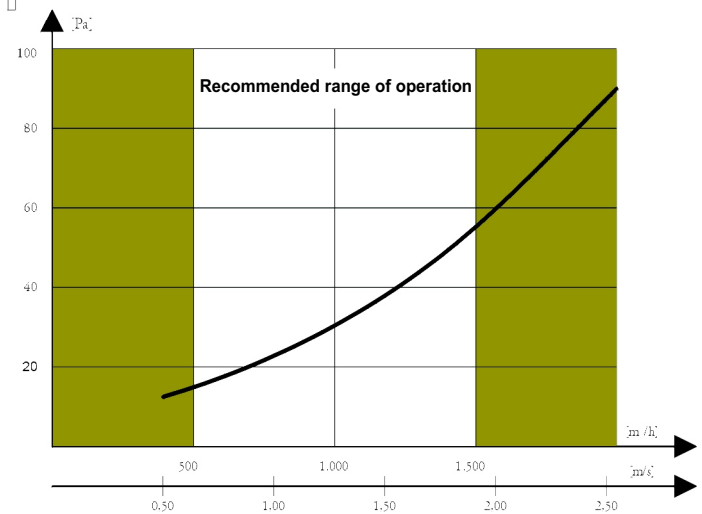
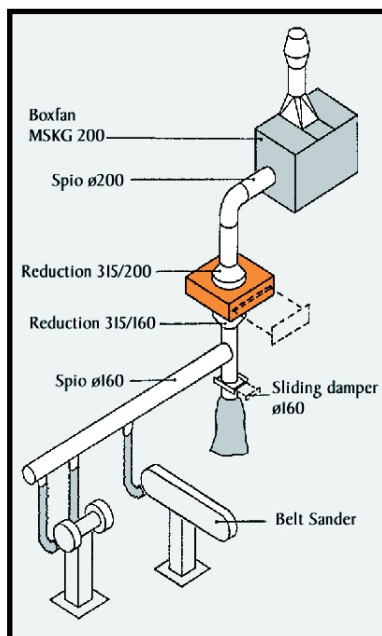
Accessories:

15-035 Replacement filter EU3

15-036 Replacement filter EU5

56-074 Reduction MF315/Np160

56-075 Reduction MF315/Np200



# GEOVENT

Hovedgaden 86  
DK-8831 Løgstrup  
Phone: (+45) 86 64 22 11  
Telefax: (+45) 86 64 30 75  
email: salg@geovent.dk  
www.geovent.com



March 2001